

Human TSLPR Protein; hFc Tag

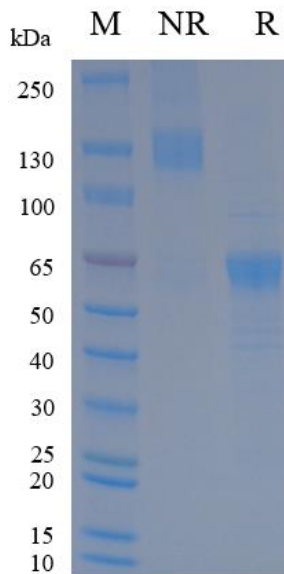
Product Information

Product Name	Human TSLPR Protein; hFc Tag
Storage temp	Store at $\leq -70^{\circ}\text{C}$, stable for 6 months after receipt. Recommend to aliquot the protein into smaller quantities for optimal storage. Please minimize freeze-thaw cycles.
Catalog# / Size	GM-88180RP-100 / 100 μg GM-88180RP-1000 / 1 mg

Protein Information

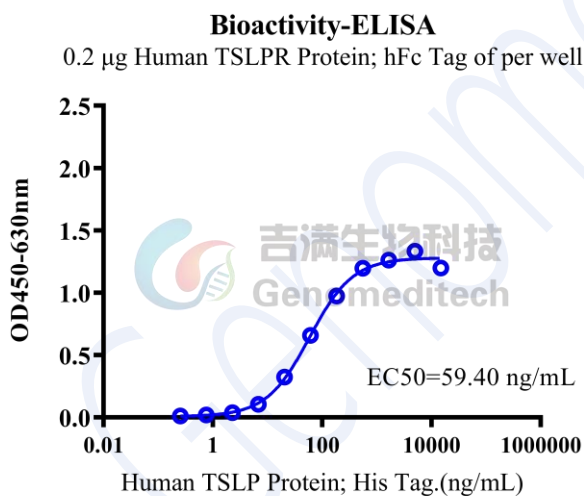
Alternative Names	TSLP R,CRLF2,IL-XR,ILXR,p2RY8,CRL2,CRLF2Y
Source	Human TSLPR Protein; hFc Tag (GM-88180RP) is expressed from human 293 cells (HEK-293). It contains AA Gly 25 - Lys 231 (Accession # Q9HC73-1). This protein carries a hFc tag at the C-terminus.
Purity	> 90% as determined by SDS-PAGE
Endotoxin	< 1 EU/ μg , determined by LAL gel clotting assay
Predicted Mol Mass	50.0 KDa
Formulation	Supplied as a 0.2 μm filtered solution of PBS, pH7.2-7.4.
Description	<p>TSLPR (Thymic Stromal Lymphopoietin Receptor) is a type of cell surface receptor protein that plays a crucial role in the immune system. It is an important component of the TSLP (Thymic Stromal Lymphopoietin) signaling pathway, involved in regulating the maturation and activation of immune cells. TSLPR is primarily expressed on dendritic cells, T cells, and other immune cells; by binding to TSLP, it promotes the regulation of immune responses, particularly in allergic and inflammatory reactions.</p> <p>Furthermore, TSLPR has been confirmed to play an important role in the occurrence and development of certain diseases. Studies have shown that abnormal expression of TSLPR is related to immune disorders such as asthma and allergies, making it a potential therapeutic target. Its structural features include a classical extracellular ligand-binding domain and an intracellular signaling region, through which TSLPR can effectively mediate TSLP signal transduction and regulate immune system balance.</p>

SDS-PAGE

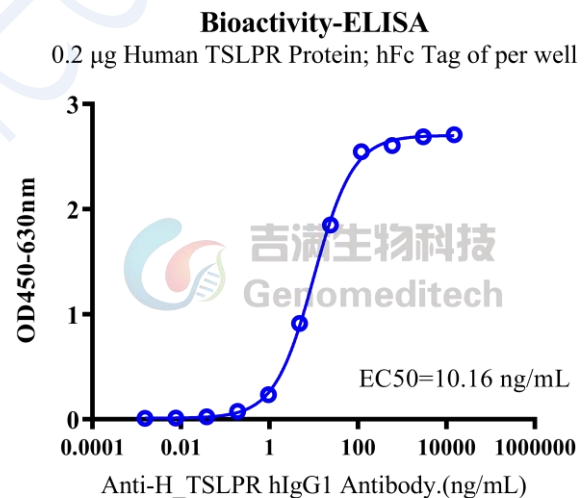


On SDS-PAGE under non-reducing (NR) condition and reducing (R) condition. The gel was stained overnight with Coomassie Blue. The purity of the protein is greater than 90%.

Bioactivity-ELISA



Human TSLPR Protein; hFc Tag (Catalog # GM-88180RP) was immobilized at 2 µg/ml (100 µL/well). Increasing concentrations of Human TSLP Protein; His Tag (Catalog # GM-87654RP) were added.



Human TSLPR Protein; hFc Tag (Catalog # GM-88180RP) was immobilized at 2 µg/ml (100 µL/well). Increasing concentrations of Anti-H_TSLPR hIgG1 Antibody (Catalog # GM-31018AB) were added.